



Nativity House Annual Gala Auction

February 27, 2010

Sponsorship Levels

Our Community Sponsor: \$10,000

Includes admission & sit-down dinner for ten (one table), company logo on front cover of auction catalog, a full color ad or personal message on the back of the auction catalog, company logo on the back of the auction bid cards/paddles, company name prominently recognized throughout the auction event, and special recognition on the Nativity House web-site.

Compassion Sponsor: \$5,000

Includes admission & sit-down dinner for ten (one table), a full page ad or personal message in the auction catalog, company name prominently recognized throughout the auction event, and special recognition on the Nativity House web-site.

Dignity Sponsor: \$2,500

Includes admission & sit-down dinner for four, full page ad or personal message in the auction catalog, company name prominently recognized throughout the auction event, and special recognition on the Nativity House web-site.

Healing Sponsor: \$1,000

Includes admission & sit-down dinner for two, half page ad or personal message in the auction catalog, company name prominently recognized throughout the auction event, and special recognition on the Nativity House web-site.

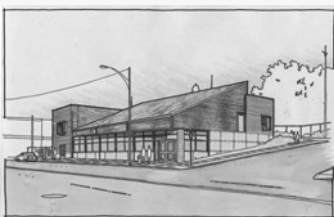
Hope Sponsor: \$500

Includes quarter page ad or personal message in the auction catalog, company name prominently recognized throughout the auction event, and special recognition on the Nativity House web-site.

Respect Sponsor: \$250

Business card size ad or personal message in the auction catalog, company name prominently recognized throughout the auction event, and special recognition on the Nativity House web-site.

Please call Nancy at Nativity House for more details
(253) 779-9248



Celebrating Hope

Thank you for your support! The Annual Gala Auction is our largest fundraising event of the year with 100% of the net proceeds going directly to helping our community's less fortunate. Our mission is simple: to honor every life...every day. This means doing what we have to do to ensure *everyone* has a place to go to receive a hot meal, shelter from the weather, warm clothing, and a strong support network.

Nativity House. It's more than a day shelter. It's a place that fosters community — a place where one can find hope.

